



Newsletter - Edition no. 7

June 2024

Southend Road



Welcome to the June edition of the Southend Road newsletter.

This project consists of 32 apartments with a mix of open market and affordable homes. When finished, it will be called Styleman Court and use the existing roads for access.

In this newsletter we will give you a brief update on the scheme and provide you with relevant information and contact details for the team.

If you have any questions or concerns during this construction project, please contact: Site Manager - Andy Harris on **07815 014667**. He is available Monday - Friday 08:00 - 16:30.

Alternatively, you can pop to site and ask the gateman to contact the team so your question or concerns can be addressed.

In case of an emergency please ring **0800 600 7695**.

Regards,
Lovell Team

COMPLETED WORKS AND WHAT'S COMING UP

Currently we have started to remove some of the site hoarding around the building and lowering the scaffolding. This will enable you to have a better view of the works and the completed design. We hope you like the look!

Works on site are progressing - below is a new timetable of works to get us to finishing these new homes for Hunstanton.

All 32 flats are completed to 1st fix stage - this means that they are ready for internal electrics to go in.

Some plots are ready to be decorated - plots 25 and 30 have been fully decorated with the kitchen installed.

Landscaping works are due to start in August, these works will increase the attractiveness of the area incorporating the finishing touches for you to see.

There are some photos of current and ongoing works on the next page.

Task	Timeline
Complete show home (Plot 1)	Mid July
Stairwells and associated services finished	September
Apartments finished	September
External works including shrubs, trees, cycle stores and bin store finished	October
Completion of all works	October

APARTMENT SALES

We are estimating Flat 1 will become the show flat from the middle of July. This will mean there are potential buyers coming to view this flat.

If you would like to view Flat 1 please contact -

William H Brown
40 Westgate
Hunstanton
PE36 5EL

hunstanton@williamhbrown.co.uk or call 01485 534506

INTERESTING FACT

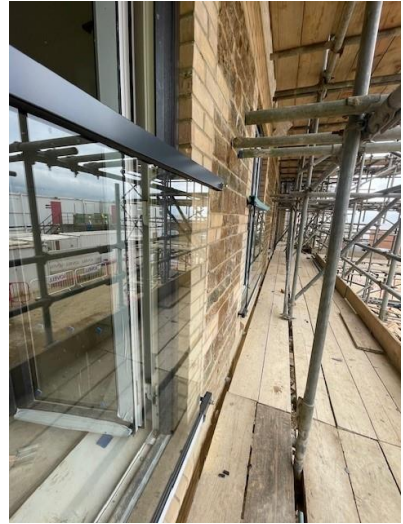
This building has a large amount of zinc incorporated into its design.

The amount of zinc used is circa 8000 m² which comes in at an approximate weight of 40,000kg.

This is equivalent to 6 African elephants!



RECENT SITE PHOTOGRAPHS



CONSIDERATE CONSTRUCTORS SCHEME AWARD

We are proud to announce that the Lovell team at our Southend Road project has won an award in the Considerate Constructors Scheme. The project received a bronze award for the scheme. It was recognised for its excellent standard and for Lovell and the Council creating positive change in the community.

Simon Medler, regional managing director at Lovell, said: “Winning this award is a proud moment for the team and strengthens the position of Lovell as a leader in the construction industry, as well as celebrating the excellent partnership we have with the Borough Council of King’s Lynn & West Norfolk.”

Russell our Contracts Manager attended an awards ceremony in London to accept the award.



ACHIVEMENTS

James Johnson our Assistant Site Manager recently received an NVQ level 6 in Construction Site Management. Below is a photo of our Contracts Manager presenting James with his certificate. Well done James!



GOLF CHARITY DAY

Lovell are proud to be one of the sponsors of the annual Charity Golf Day in Hunstanton on Friday 21st June.

Participants will club together to have some fun playing at Hunstanton Golf Club, while raising critical funds for the RNLI. Its crew's lifesaving work is funded entirely by donations and legacies. Last year the event raised £31,000.

DANGERS OF BUILDING SITES

We know building sites hold great interest for some people, especially youngsters, and we would ask you to remind children of the dangers of building sites, in particular young children and teenagers.

Please be particularly aware of the lorries delivering to and leaving the site. Please make sure you are seen, and we can see you!

Lovell Partnerships take care to ensure the site perimeter is safe and secure and the site is fully locked up at the end of each day. Our gateman works tirelessly to ensure public safety at the site entrance and cleans all vehicles leaving site.

MINIMISING LANDFILL

As a partnership that cares about the impact of construction on the environment, we are always striving to eliminate the waste we create during the construction process. This in turn reduces the amount of waste that goes to landfill.

Typically, Lovell will use this approach:

REDUCE: can we prevent and reduce waste generation in the first place?

REUSE: can we give the products a second life before they become waste?

RECYCLE: can waste materials be re-processed into products, materials, or substances whether for the original or other purposes?

RECOVERY: if we can't reuse or recycle, can we incinerate to produce alternative energy?

DISPOSAL: as a last resort, some waste is sent to landfill. Currently only 0.28% of Lovell waste goes to landfill. 99.72% gets reused/recycled etc.

MINIMISING DISRUPTION

We would like to thank you for your patience regarding construction vehicle movement into and out of site, particularly with the size of some of our deliveries.

We appreciate that construction projects have an impact on our neighbours and surrounding residents.

The designated site working hours are:

7:30am - 5:00pm Monday to Friday, with occasional Saturday mornings (if necessary). Deliveries are between 8:00am and 4:00pm.

CONSIDERATE CONSTRUCTORS SCHEME



The site has been registered with the Considerate Constructors Scheme (CCS), which means that how we interact with our neighbours and operate our site will be assessed by an independent body. More information on CCS can be found at www.ccscheme.org.uk.

CCS is an independent scheme that monitors our construction site against a code of considerate practice, designed to encourage best practice beyond statutory requirements.

- There are three main areas monitored:
- **Respect the Community** - Constructors should give utmost consideration to their impact on neighbours and the public
 - **Care for the Environment** - Constructors should protect and enhance the environment
 - **Value their Workforce** - Constructors should provide a supportive and caring working environment

At Lovell we pride ourselves on community engagement. Throughout this development we will be looking for local projects or charities to support: if you have any suggestions for this please contact us.

If you want to comment on our site or workforce, please contact Lovell Partnerships on 01603 709800 or the Considerate Constructors Scheme on 0800 783 1423, quoting our registration number **134365**

MEET THE TEAM



MICHAEL SAUNDERS
OPERATIONS MANAGER



RUSSELL EDWARDS
CONTRACTS MANAGER



ANDY HARRIS
SITE MANAGER



JAMES JOHNSON
ASSISTANT SITE MANAGER



ADRIAN BOULTER
HEALTH, SAFETY &
ENVIRONMENT MANAGER



HOLLY BAKER
H&S ADVISOR
& CCS SUPPORT



WILL MCCONNELL
QUANTITY SURVEYOR



DAVID BULFORD
MANAGING QUANTITY
SURVEYOR